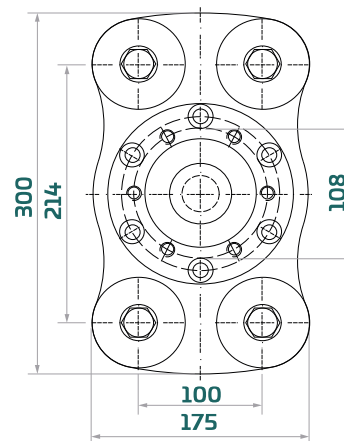
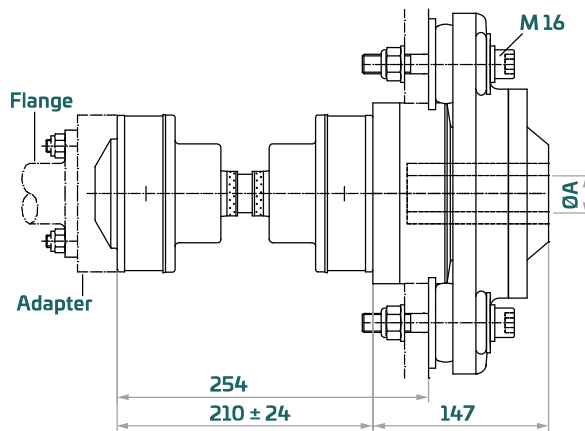


# Moduline B20

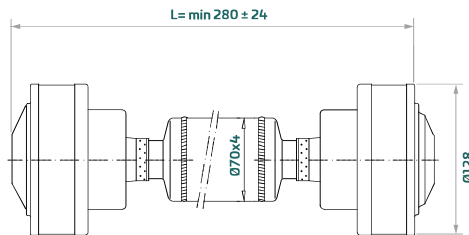


Max. static torque ( $\text{ØA} = 2''$ )	1400 Nm / 1034 lbft
Max. propeller shaft revolutions	2000 rpm
Max. continuous propeller thrust	14 kN / 3150 lbf



## CV 21

Custom-length CV 21 driveshaft is available in lengths from 210 mm (from 280 mm with tubeshaft design). Maximum length depends on shaft rpm.



## Application examples

	Rated power kw (HP)	Crankshaft rpm	Gearbox ratio
Displacement boat	100 (135)	2600	3 : 1
Planing boat	165 (225)	3900	2 : 1

Note: Above rating examples are based on optimum conditions with  $2^\circ$  for each CV joints. In case a CV joint will run at an angle greater than  $2^\circ$ , the max. permitted power must be reduced (normally by 8-9% for each degree over  $2^\circ$ ). The maximum allowable joint angle is  $4-8^\circ$  depending on shaft rpm.

## Propeller shaft options

B20 standard version accepts following propeller shaft diameters:

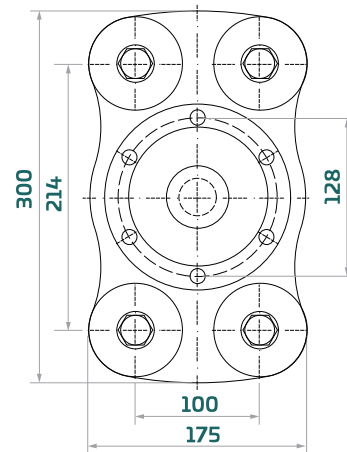
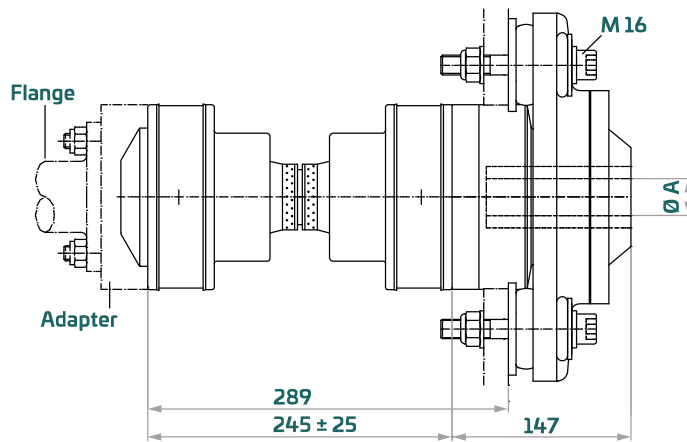
$\text{ØA}$	35 mm	1 ½ "	40 mm	1 ¾ "	45 mm	50 mm	2 "
-------------	-------	-------	-------	-------	-------	-------	-----

All B20 systems are also available with flange coupling. Please contact our technical department to assist you in selecting a suitable Aquadrive system for your application.

# Moduline B20

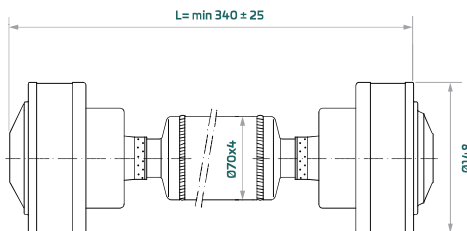


Max. static torque ( $\varnothing A = 2''$ )	1400 Nm / 1034 lbft
Max. propeller shaft revolutions	2000 rpm
Max. continuous propeller thrust	14 kN / 3150 lbf



## CV 30

Custom-length CV 30 driveshaft is available in lengths from 245 mm (from 340 mm with tubeshaft design). Maximum length depends on shaft rpm.



## Application examples

	Rated power kw (HP)	Crankshaft rpm	Gearbox ratio
Displacement boat	130 (175)	2600	3 : 1
Planing boat	200 (270)	3300	2 : 1

Note: Above rating examples are based on optimum conditions with 2° for each CV joints. In case a CV joint will run at an angle greater than 2°, the max. permitted power must be reduced (normally by 8-9% for each degree over 2°). The maximum allowable joint angle is 5-8° depending on shaft rpm.

## Propeller shaft options

B20 standard version accepts following propeller shaft diameters:

ØA	35 mm	1½"	40 mm	1¾"	45 mm	50 mm	2"
----	-------	-----	-------	-----	-------	-------	----

All B20 systems are also available with flange coupling. Please contact our technical department to assist you in selecting a suitable Aquadrive system for your application.