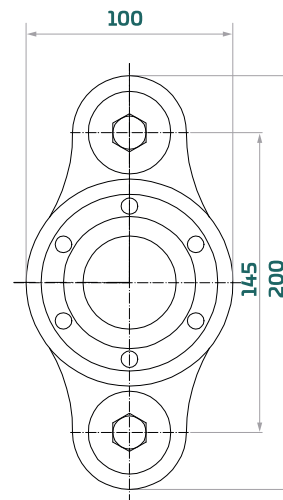
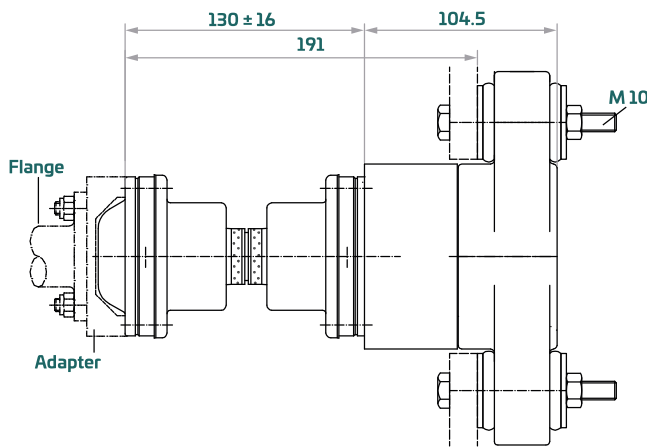


Moduline B10



Max. static torque (ØA = 20 mm)	1034 Nm / 763 lbft
Max. propeller shaft revolutions	4000 rpm
Max. continuous propeller thrust	11 kN / 2475 lbf



Application examples

	Rated power kw (HP)	Crankshaft rpm	Gearbox ratio
Sailing boat	33 (45)	3800	2.6 : 1
Displacement motorboat	26 (35)	2600	3.0 : 1

Note: Above rating examples are based on optimum conditions with 2° for each CV joints. In case a CV joint will run at an angle greater than 2°, the max. permitted power must be reduced (normally by 8-9% for each degree over 2°). The maximum allowable joint angle is 4-8° depending on shaft rpm.

Propeller shaft options

B10 standard version accepts following propeller shaft ØA:

3/4"	20 mm	22 mm	7/8"	25 mm	1"	1 1/8"	30 mm	1 1/4"	32 mm	35 mm	1 1/2"	40 mm
------	-------	-------	------	-------	----	--------	-------	--------	-------	-------	--------	-------

Oversize version with external clamp mechanics suits shaft diameters:

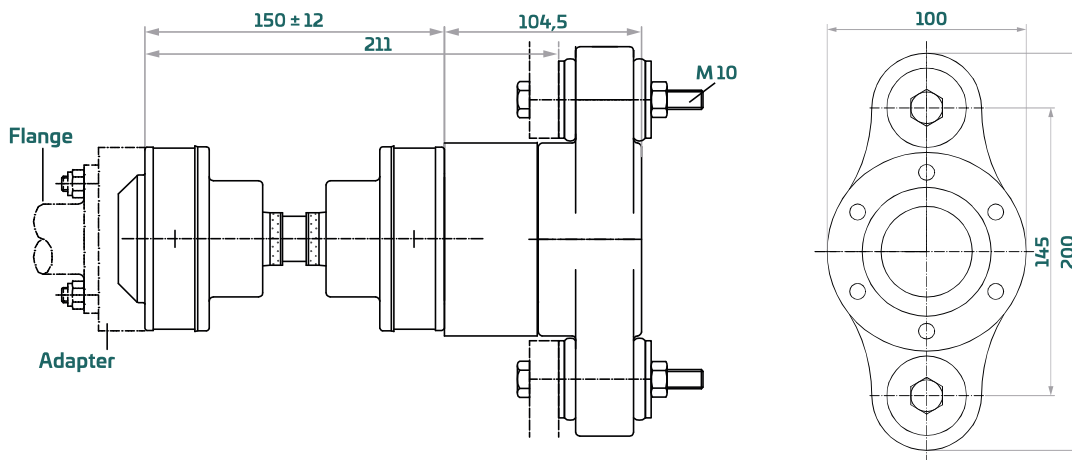
1 3/4"	45 mm	50 mm	2"
--------	-------	-------	----

All B10 systems are also available with flange coupling to suit standard BW 5" propeller flange. Please contact our technical department to assist you in selecting a suitable Aquadrive system for your application.

Moduline B10

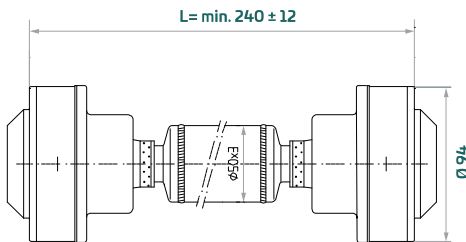


Max. static torque (ØA = 1")	1300 Nm / 969 lbft
Max. propeller shaft revolutions	4000 rpm
Max. continuous propeller thrust	11 kN / 2475 lbf



CV 10

Custom-length CV 10 driveshaft is available in lengths from 150 mm (from 240 mm with tubeshaft design). Maximum length depends on shaft rpm.



Application examples

	Rated power kw (HP)	Crankshaft rpm	Gearbox ratio
Planing boat	62 (85)	3800	2.0 : 1
Sailing boat	55 (75)	3800	2.6 : 1
Displacement motorboat	40 (55)	2600	3.0 : 1

Note: Above rating examples are based on optimum conditions with 2° for each CV joints. In case a CV joint will run at an angle greater than 2° , the max permitted power must be reduced (normally by 8-9% for each degree over 2°). The maximum allowable joint angle is 4-8° depending on shaft rpm.

Propeller shaft options

B10 standard version accepts following propeller shaft ØA:

3/4"	20 mm	22 mm	7/8"	25 mm	1"	1 1/8"	30 mm	1 1/4"	32 mm	35 mm	1 1/2"	40 mm
------	-------	-------	------	-------	----	--------	-------	--------	-------	-------	--------	-------

Oversize version with external clamp mechanics suits shaft diameters:

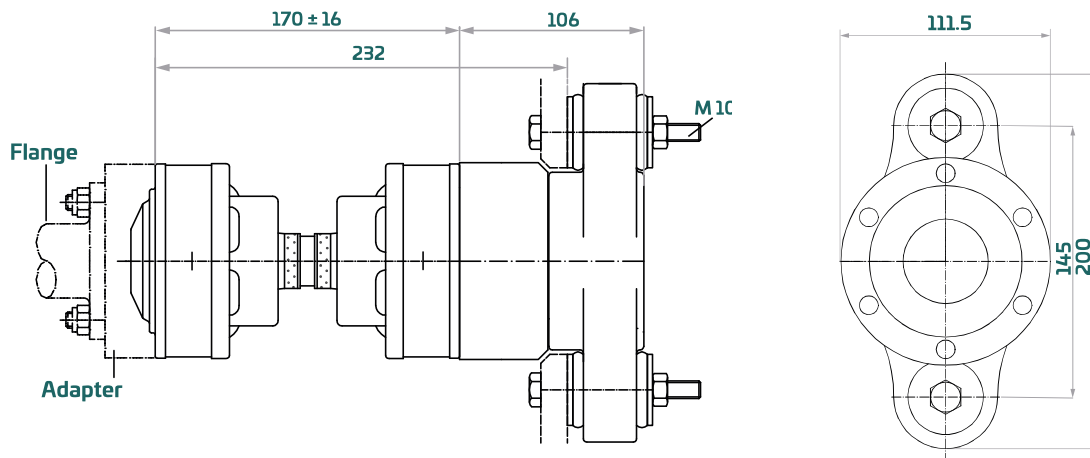
1 3/4"	45 mm	50 mm	2"
--------	-------	-------	----

All B10 systems are also available with flange coupling to suit standard BW 5" propeller flange. Please contact our technical department to assist you in selecting a suitable Aquadrive system for your application.

Moduline B10

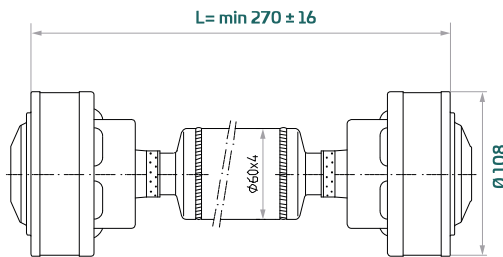


Max. static torque ($\theta A = 1 \frac{1}{4}''$)	1625 Nm / 1200 lbft
Max. propeller shaft revolutions	4000 rpm
Max. continuous propeller thrust	11 kN / 2475 lbf



CV 15

Custom-length CV 15 driveshaft is available in lengths from 170 mm (from 270 mm with tubeshaft design). Maximum length depends on shaft rpm.



Application examples

	Rated power kw (HP)	Crankshaft rpm	Gearbox ratio
Planing boat	114 (155)	3800	2.0 : 1
Semi-displacement motorboat	96 (130)	3300	2.2 : 1
Sailing boat	85 (115)	3300	2.6 : 1
Displacement motorboat	66 (90)	2600	3.0 : 1

Note: Above rating examples are based on optimum conditions with 2° for each CV joints. In case a CV joint will run at an angle greater than 2°, the max. permitted power must be reduced (normally by 8-9% for each degree over 2°). The maximum allowable joint angle is 4-8° depending on shaft rpm.

Propeller shaft options

B10 standard version accepts following propeller shaft θA :

$\frac{3}{4}''$	20 mm	22 mm	$\frac{7}{8}''$	25 mm	1"	$1 \frac{1}{8}''$	30 mm	$1 \frac{1}{4}''$	32 mm	35 mm	$1 \frac{1}{2}''$	40 mm
-----------------	-------	-------	-----------------	-------	----	-------------------	-------	-------------------	-------	-------	-------------------	-------

Oversize version with external clamp mechanics suits shaft diameters:

$1 \frac{3}{4}''$	45 mm	50 mm	2"
-------------------	-------	-------	----

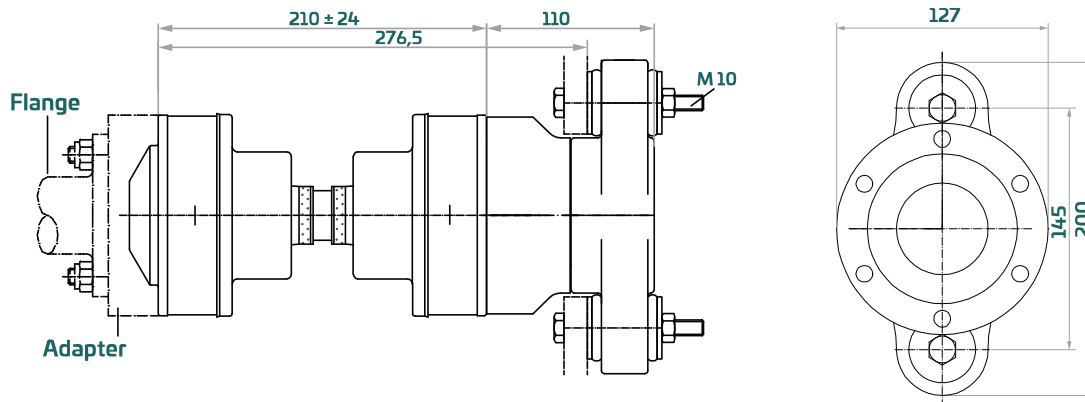
All B10 systems are also available with flange coupling to suit standard BW 5" propeller flange. Please contact our technical department to assist you in selecting a suitable Aquadrive system for your application.

Moduline B10



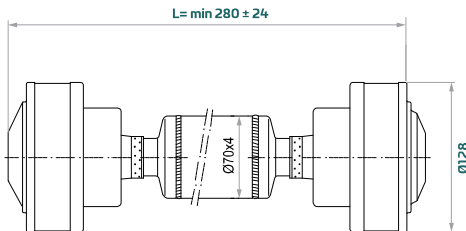
CVB 21.10

Max. static torque ($\text{ØA} = 40 \text{ mm}$)	2068 Nm / 1526 lbft
Max. propeller shaft revolutions	4000 rpm
Max. continuous propeller thrust	11 kN / 2475 lbf



CV 21

Custom-length CV 21 driveshaft is available in lengths from 210 mm (from 280 mm with tubeshaft design). Maximum length depends on shaft rpm.



Application examples

	Rated power kw (HP)	Crankshaft rpm	Gearbox ratio
Planing boat	173 (235)	3800	2.0 : 1
Semi-displacement motorboat	147 (200)	3300	2.2 : 1
Displacement motorboat	96 (130)	2500	3.1 : 1

Note: Above rating examples are based on optimum conditions with 2° for each CV joints. In case a CV joint will run at an angle greater than 2°, the max permitted power must be reduced (normally by 8-9% for each degree over 2°). The maximum allowable joint angle is 4-8° depending on shaft rpm.

Propeller shaft options

B10 standard version accepts following propeller shaft ØA :

3/4"	20 mm	22 mm	7/8"	25 mm	1"	1 1/8"	30 mm	1 1/4"	32 mm	35 mm	1 1/2"	40 mm
------	-------	-------	------	-------	----	--------	-------	--------	-------	-------	--------	-------

Oversize version with external clamp mechanics suits shaft diameters:

1 3/4"	45 mm	50 mm	2"
--------	-------	-------	----

All B10 systems are also available with flange coupling to suit standard BW 5" propeller flange. Please contact our technical department to assist you in selecting a suitable Aquadrive system for your application.