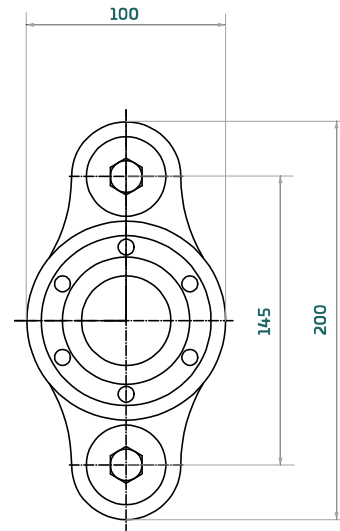
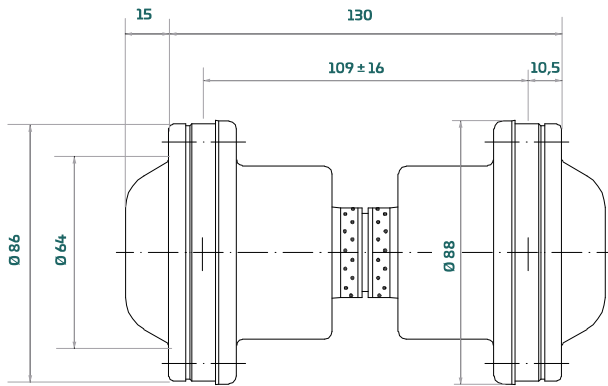


Moduline B05



Max. static torque ($\text{ØA} = 20 \text{ mm}$)	610 Nm / 450 lbft
Max. propeller shaft revolutions	4000 rpm
Max. continuous propeller thrust	6 kN / 1350 lbf



Application examples

	Rated power kw (HP)	Crankshaft rpm	Gearbox ratio
Sailing boat	25 (34)	3800	2.6 : 1
Displacement motorboat	20 (27)	2600	3.0 : 1

Note: Above rating examples are based on optimum conditions with 2° for each CV joints. In case a CV joint will run at an angle greater than 2°, the max. permitted power must be reduced (normally by 8-9% for each degree over 2°). The maximum allowable joint angle is 4-8° depending on shaft rpm.

Propeller shaft options

B10 standard version accepts following propeller shaft ØA :

20 mm	22 mm	3/8"	25 mm	1"	1 1/8"	30 mm
-------	-------	------	-------	----	--------	-------